

INDICATE HOW YOU WOULD LIKE YOUR NAME(S) DISPLAYED ON THE PLAQUE
20 CHARACTERS PER LINE INCLUDING SPACES

LINE ONE:

LINE TWO:

LINE THREE:



The Toll House Museum was established in 2017 with help from a grant from Essex National Heritage. The building itself is a replica of the original toll house that was built in 1828 and served as a place for the toll keeper to stay warm and dry as well as make shoes in his spare time. In 1868, tolls were no longer taken to cross the bridge and the little building fell into disrepair. In 1928, the toll house was purchased by Henry Ford for his Greenfield Village Museum in Dearborn Michigan. With plans from the original



building, students from Whittier Tech built the replica with villagers and friends completing the interior. Display boards, historical objects, and a map of the historic houses tell the stories of the Makers, Women and Physicians of Rocks Village; Slaves and Abolitionists near by; The Toll House and Toll Keepers; and Transportation in and around the village.

Contact Lydia@rocksvillage.org for a tour of the Toll House and Hand Tub House.

SPONSOR A SETTEE AT THE ROCKS VILLAGE HAND TUB HOUSE IN HAVERHILL

Rocks Village is a historic district in the East Parish of Haverhill, MA. Established in the early 1700's, Rocks Village maintains many of the original houses and common buildings.



The Rocks Village Hand Tub House was built circa 1829 for a self-governed, self-supported call fire company. It served as a fire house until 1955.

The Protector No.3 company, organized in 1851 under the command of Captain Stephen Noyes, was in full operation in the second half of the 19th century. As such, in 1875, improvement were made to the upper hall for \$1,000 and included "carpet of rich texture and tasty design, black walnut settees upholstred in hairclot, and several fine pictures."

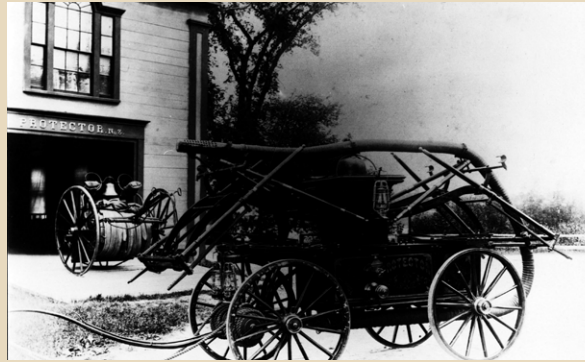
Just recently (2018), in addition to other major work on the building (2009 - 2014), the second floor was re-plastered and repainted with the help of donations, yard sale proceeds, and a grant from the Methuen Festival of Trees.

Although the carpet and the pictures from 1875 are gone, ten (10) settees are still part of the Hand Tub House and the Rocks Village Memorial Association would like to make them usable again. With your help we can refurbish these settees to finish restoration on the second floor.

The estimate to clean, repair, upholster, and oil each settee is \$1,500 and you can sponsor a part or a whole settee. In recognition of contributions to the fund, Rocks Village Memorial Association will install a personalized plaque on each settee, once refurbished.



Each spring, in conjunction with Historic New England, the RVMA holds a walking tour through the village. Starting at the HTH and the Toll House Museum, visitors will discover the riverfront neighborhood of Rocks Village, once a bustling community of stores, taverns, and wharves, settled in the late eighteenth century, through tales of merchants, shipbuilders, a purported witch, and more. With the settees refurbished, the second floor of the HTH will tell the story of how the men and woman, who lived and worked in the neighborhood, came together to maintain the Protector No.3 company in the late 1800s.



The Rocks Village Memorial Association (RVMA), established in 1908, is a non-profit (501c3) organization dedicated to improving the quality of life in Haverhill by fostering a community in Rocks Village through events, education, and historic preservation of the local fire/meeting house.

We invite friends and neighbors from near and far to join us in our meetings, pot-lucks, gardens, and community service.

To find out more about the village, events, projects, and history visit rocksvillage.org.

I AM INTERESTED IN MAKING A DONATION TO THE SPONSOR A SETTEE CAMPAIGN FOR:

\$125 \$250 \$500 \$750 \$1,500

NAME

DATE

ADDRESS

CITY

STATE

ZIP

PHONE

EMAIL

PLEASE MAKES CHECKS PAYABLE TO ROCKS VILLAGE MEMORIAL ASSOCIATION AND SEND TO:

LYDIA HARRIS, 28 RIVER ROAD, HAVERHILL, MA 01830

WWW.ROCKSVILLAGE.ORG